



TROAX[®]

A revolution in your hands

VERSATILE MACHINE GUARDING FROM TROAX



NEW!
PATENT PENDING

RAPID FIX[™]

VERSATILE MACHINE GUARDING



The next step in the evolution of machine protection

Troax currently has a well-proven machine safety system where the panels are bolted to the post with the unique Fixture, this is Smart Fix.

Troax's new Rapid Fix system is composed of the same posts and panels, but with uniquely engineered brackets that create a revolutionary, flexible, functional and accessible system.

[Read more at www.troax.com/rapidfix](http://www.troax.com/rapidfix)

RAPID FIX™ VERSATILE MACHINE GUARDING

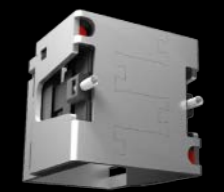
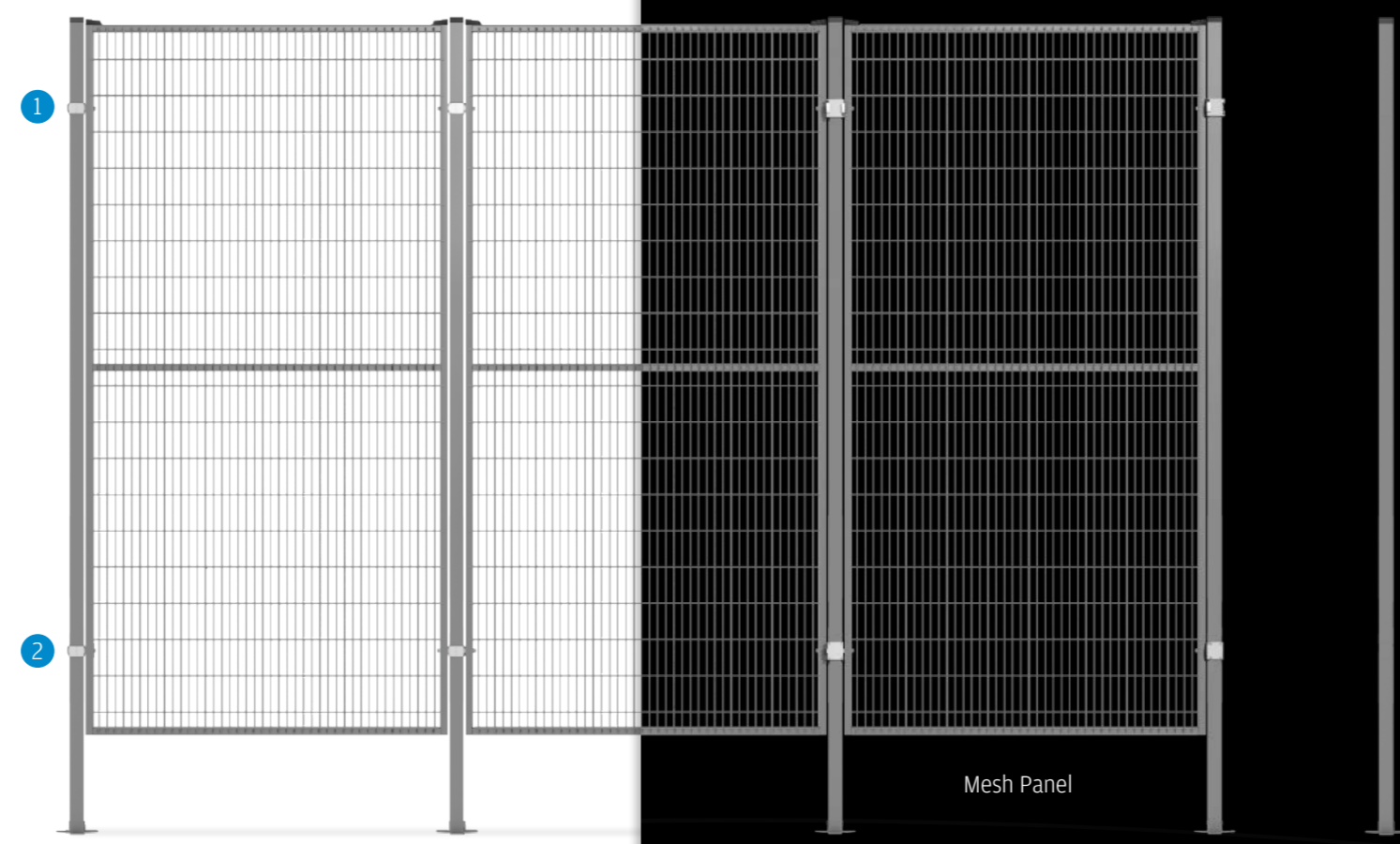
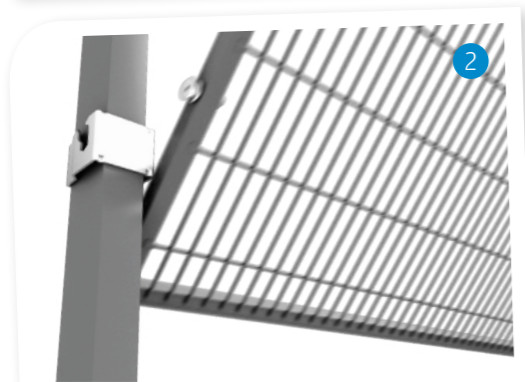
A refined machine safety system

Rapid Fix is the next stage of development. A response to market and customer needs for a flexible solution for quick access, like the need to perform maintenance.

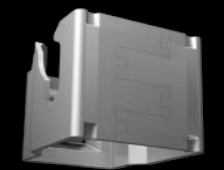
Rapid Fix brackets are more functional than Smart Fix. The lower bracket on Rapid Fix has a slot that the panel hooks into and the upper bracket has a unique locking mechanism that snaps the panel in the locked position. The locking mechanism allows for panels to be removed and reinstalled quickly and easily.

Compliant with Machinery Directive

We work continuously to engineer and adapt both existing and new products before they reach the market. As a result Rapid Fix meets or exceeds all the requirements in the Machinery Directive - 2006/42/EC.



Upper Fixture - Secured with ease using the built-in click function



Lower Fixture - Secures the panel's lower position in a simple way.



SMART FIX™

FLEXIBLE MACHINE GUARDING



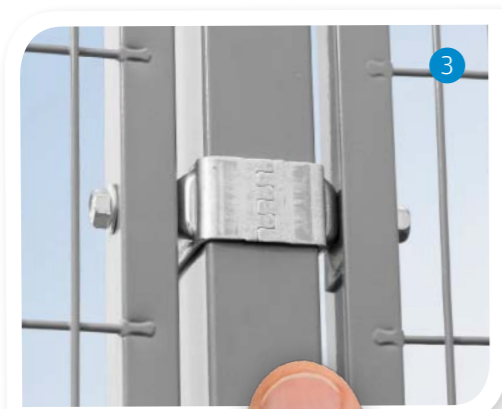
A well-proven machine safety system

Smart Fix is a well-proven machine safety system that includes mesh panels, hinged and sliding doors, posts, corner brackets and a smart panel method. The system has many unique

features and meets the requirements of the Machinery Directive. Smart Fix can be adjusted to compensate for uneven floors. It is possible to alter the angle of the corner fittings up to 180 degrees and is based on components that can be combined with other Troax systems.

Compliant with Machinery Directive

We work continuously to engineer and adapt both existing and new products before they reach the market. As a result Rapid Fix meets or exceeds all the requirements in the Machinery Directive - 2006/42/EC.



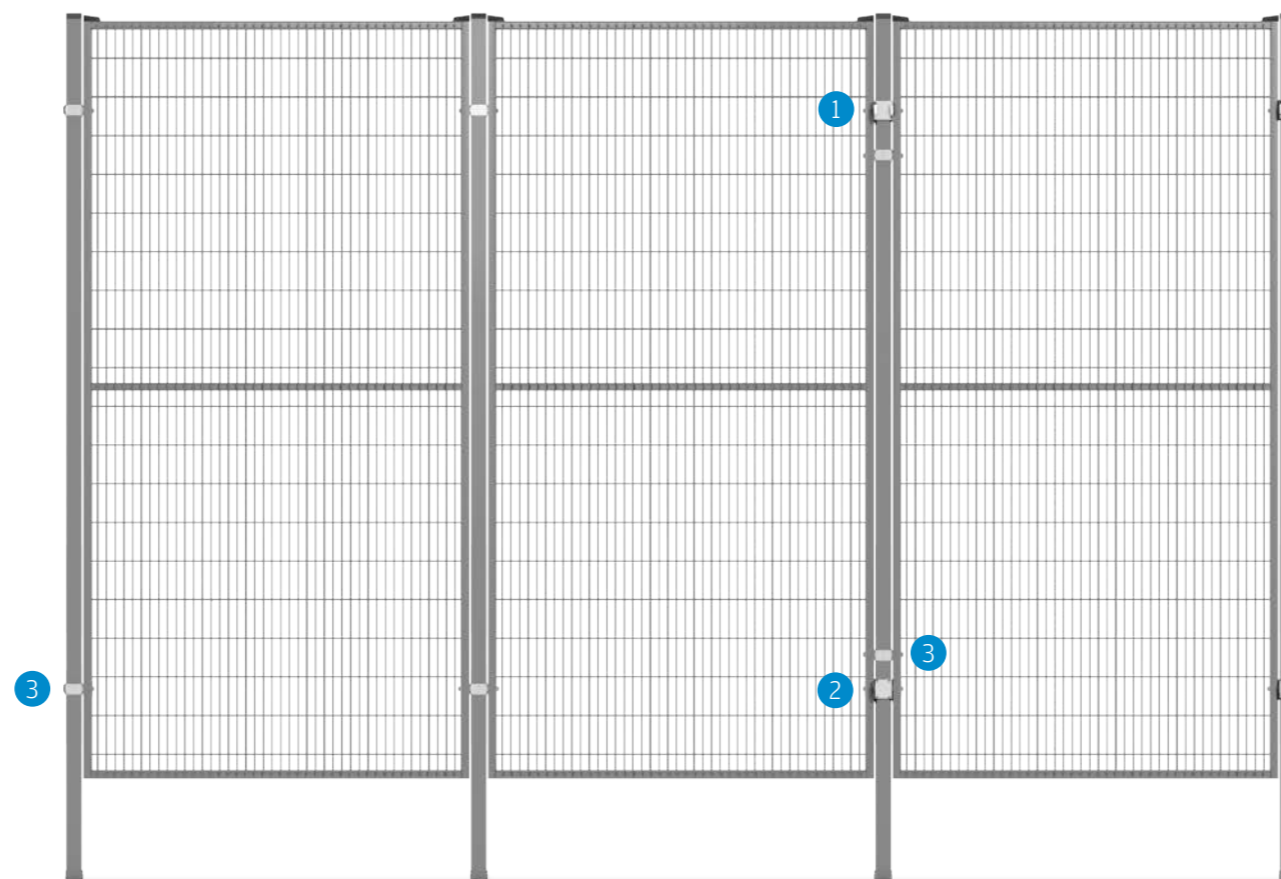
COMBINED

SMART FIX™ + RAPIDFIX™

Revolutionary Combination Possibilities

Since Rapid Fix uses the same posts and panels as Smart Fix, it is possible to combine the two systems. If Smart Fix is already

installed, simply change out the brackets to upgrade to Rapid Fix when quick access is required. If Rapid Fix is the existing system, converting to Smart Fix is again just a simple bracket change.



The idea throughout the development of Rapid Fix has been that it should be possible to upgrade, select and combine the two systems without having to replace an already installed Smart Fix system.

Read more at www.troax.com/rapidfix

Need help to choose which system to use?

Here are some FAQ to help you.

Q: Do you need to get access around the machinery, everywhere?

A: For best access you should choose a complete installation of *Rapid Fix*.

Q: Do you need access to certain parts of the machinery?

A: Use preferably a combination of *Smart Fix* and *Rapid Fix*.

Q: Is there no need to get access around the machinery?

A: Most cost effective is to use *Smart Fix* with a hinged door.

Are you still unsure? Please call your local sales office today.

[Read more at www.troax.com/rapidfix](http://www.troax.com/rapidfix)

