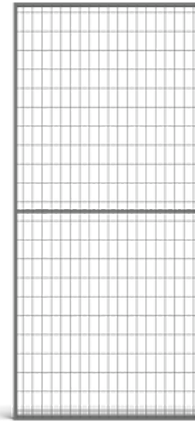


PANEL UR300 ACL

UR 300 panels are an ideal solution for providing a secure work environment. The mesh, constructed from press welded 2.5 mm wires with mesh aperture 100x50 mm, is welded to a 19x19 mm tubular frame, giving supreme protection against falling goods from pallet racks. The Anti Collapse panel system is an effective way to protect walkways and pallet rack aisles from unnecessary accidents. Panels are available in 3 widths from 700 to 1500 mm in height of 2200 or 1100 mm. Troax can supply mesh panels and systems in any colour or Hot Dip Galvanized execution. Our standard grey colour RAL 7037 creates the best visibility condition over the safety zone.



FACTS

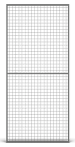
ART. NO	COMPONENTS	HEIGHT (mm)	WIDTH (mm)	MESH SIZE (mm)	FRAME (mm)
35070101	Panel UR300 2200x700	2200	700	50x100	19x19
35070111	Panel UR300 1100x700	1100	700	50x100	19x19
35120101	Panel UR300 2200x1200	2200	1200	50x100	19x19
35120111	Panel UR300 1100x1200	1100	1200	50x100	19x19
35150101	Panel UR300 2200x1500	2200	1500	50x100	19x19
35150111	Panel UR300 1100x1500	1100	1500	50x100	19x19

ACCESSORIES

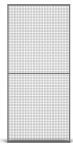


CUT PROFILE
PARTITIONING AND
ANTI-COLLAPSE

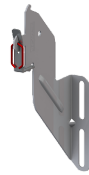
COMBINE WITH



PANEL UR350 ACL



PANEL UR325 ACL



UNI-BRACKET



ULTIMA BRACKET



SHELVES

IMAGES

