

PANEL FULL STEEL

The URSP sheet metal panel offers good protection for applications where there is a welding spark or splash risk. A profiled steel sheet of 0,7 mm is welded onto a 19x19x2200 mm high frame which will create a fully covered cell without floor sweep.

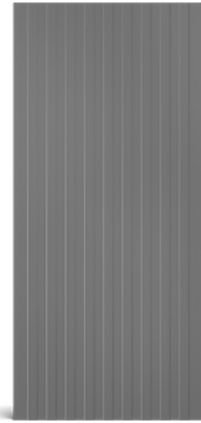
The URSP panel is tested to withstand an impact of 1000 joules.

The panels can be assembled with our Safe Fix system, which mounts the panels in front of the post, leaving no gaps. If assembled with the Smart Fix system, the gaps between panels and pots can be covered with our Gap Cover or Foam Infill accessories.

The UXSP panel is used for the door blades. It's 2100 mm high, leaving a 100 mm floor sweep and comes in two widths, 980 mm or 1180 mm.

Standard panels are available in 6 widths, from 200 mm to 1200 mm to fit a system height of 2200 mm, without a floor gap.

Standard colour for the panel frame is grey RAL 7037, but the panels can be supplied in any colour of your choice.



FACTS

ART. NO	COMPONENTS	HEIGHT (mm)	WIDTH (mm)	MESH SIZE (mm)	FRAME (mm)
35020511	Panel UR SP 2200x200	2200	200	Full Steel	19x19
35030511	Panel UR SP 2200x300	2200	300	Full Steel	19x19
35070511	Panel UR SP 2200x700	2200	700	Full Steel	19x19
35080511	Panel UR SP 2200x800	2200	800	Full Steel	19x19
35100511	Panel UR SP 2200x1000	2200	1000	Full Steel	19x19
35120511	Panel UR SP 2200x1200	2200	1200	Full Steel	19x19
36098301	Door UX SP P 980	2100	980	Full Steel	30x20
36118901	Door UX SP P 1180	2100	1180	Full Steel	30x20

Finish on panels, posts and powder coated accessories has the last figure variants in **ART. NO.**

"1" = RAL 7037 Dusty Grey; "2" RAL 1018 Zink Yellow; "5" All other RAL colours or cut/welded; "6" RAL 9005 Jet Black, "8" Hot dip galvanized



PANEL FULL STEEL

MACHINE GUARD
WAREHOUSE PARTITIONING
AUTOMATED WAREHOUSE

ACCESSORIES



GAP COVER



TUBES

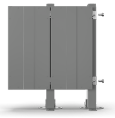


FOAM INFILL

COMBINE WITH



POST 60X40



SAFE FIX



SMART FIX



PANEL FULL STEEL

MACHINE GUARD
WAREHOUSE PARTITIONING
AUTOMATED WAREHOUSE

IMAGES

