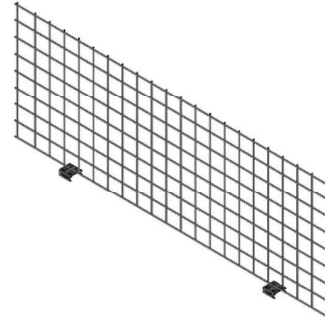


## CLIPPED DIVIDERS

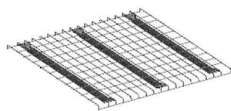
The clipped dividers are used in picking areas to separate products on the shelves. The dividers can be placed perpendicularly or parallel to the beams. They are clipped on the mesh decks by stable connectors, and you can effortlessly change their position immediately. We also produce bespoke dividers (dimensions, mesh size, wire thickness for stability and finish). The dividers have no sharp edges, making them very safe for the user.



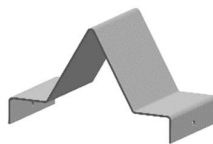
## FACTS

Index	0106.1248.PG	0106.1249.PG
Type	clipped on (crossed)	clipped on (longitudinal)
Depth	1100 mm	1330 mm
Height	400 mm	400 mm
Mesh size	50 x 50 mm	50 x 50 mm
Safe edges	✓	✓
Rounded wires	✓	✓
Finish	pregalvanized	pregalvanized

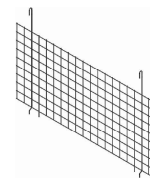
## COMBINE WITH



MESH SHELF



PALLET STOPPER



HANGING DIVIDER