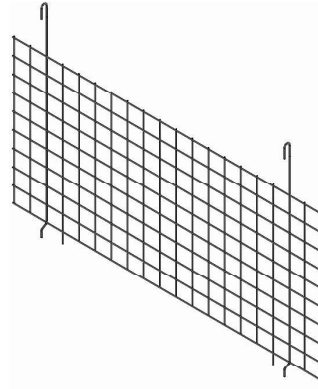


HANGING DIVIDERS

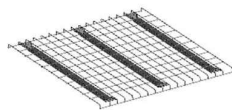
The hanging dividers are used in picking areas to separate products on the shelves. The dividers can be placed perpendicularly or parallel to the beams. They are secured to the mesh shelf above with hooks, and located onto the bottom shelf with protruding wires. This system is the most stable solution, but you need to have a top mesh shelf. These dividers are perfect for larger picking areas. We also produce bespoke dividers (dimensions, mesh size, wire thickness for stability and finish). The dividers have no sharp edges, making them very safe for the user.



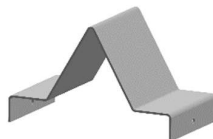
FACTS

Index	0106.1250.PG	0106.1251.PG
Type	hanging (crossed)	hanging (longitudinal)
Depth	1100 mm	1330 mm
Height	500 mm	500 mm
Mesh size	50 x 50 mm	50 x 50 mm
Safe edges	✓	✓
Rounded wires	✓	✓
Finish	pregalvanized	pregalvanized

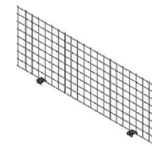
COMBINE WITH



MESH SHELF



PALLET STOPPER



CLIPPED ON DIVIDER