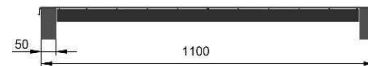
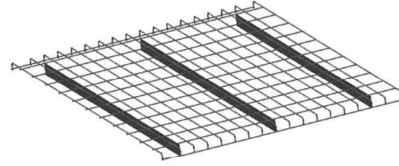


## MESH SHELF 300 kg

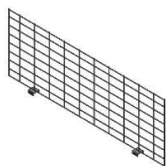
The mesh shelf 0105.4231 is made of welded wire and three flat support bars. The shelf panel is 1100 mm deep and 890 mm wide. The mesh shelf is produced from pregalvanized materials and has front and back safety wire. There are no sharp edges and all wires are rounded making the shelf very safe for picking.



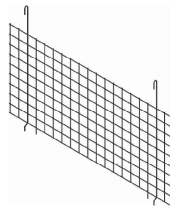
## FACTS

Index	0105.4231.PG
Size	1100 x 890 mm
Load capacity	300 kg / m <sup>2</sup> UDL
Reinforcements	flat bar (3)
Mesh size	100 x 50 mm
Beam	50 mm
Finish	pregalvanized

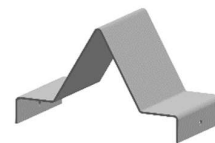
## COMBINE WITH



CLIPPED ON DIVIDER



HANGING DIVIDER



PALLET STOPPER