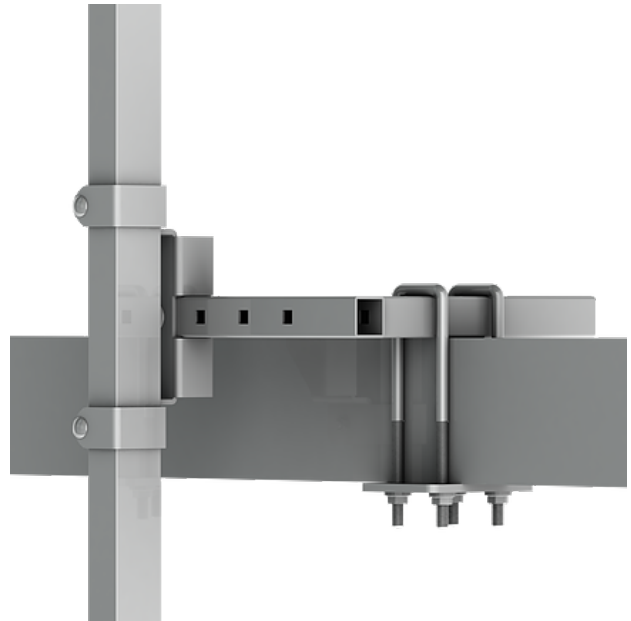


BEAM SUPPORT FIXINGS

The Belt Conveyor Guarding system can be assembled with the standard post onto a floor or directly onto the conveyor beam using special beam supports.

The beam supports are easily installed onto the belt conveyor beam using U-shaped holders that are clamped around the beam support on each side. The holders are available in three sizes, 235 mm, 285 mm and 335 mm, to cover various sizes of beams. By combining the straight beam support with the angled, and the various lengths (heights) of the mesh panels, it's possible to make a perfect design fit for your conveyor.

The beam support fixings, along with the assembly parts are all hot dip galvanized coated, providing good corrosion protection suitable for very harsh environments.



FACTS

ART. NO	COMPONENTS
89045223	Beam bracket straight HdG
89045224	Beam bracket angled HdG
89045225	Kit U-support M12 L=235 HdG
89045226	Kit U-support M12 l=285 HdG
89045227	Kit U-support M12 L=335 HdG
89045228	Kit fixing plate U-support HdG
89045229	Kit fasteners beam bracket
89045240	Kit Nuts M12

IMAGES

