



STEEL INFILL

Steel sheet panels are a good option when you want to limit the visibility to the enclosure, such as welding cells.

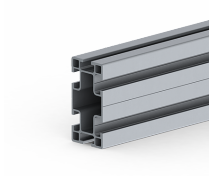
The steel sheets can be used as infill in combination with mesh or polycarbonate to give you the flexibility to choose the most suitable combination.

The panels are made of 1 mm cross-bent steel sheet metal, which provides extra reinforcement. They can be supplied in dimensions according to your requirements, with a maximum size of 2020x979mm. They are fixed to the profile using the zinc panel lock, known as PL3.



FACTS

COMBINE WITH



ALUMINIUM
PROFILES



MESH INFILL



POLYCARBONATE
INFILL