

FlexGuard Dockgate

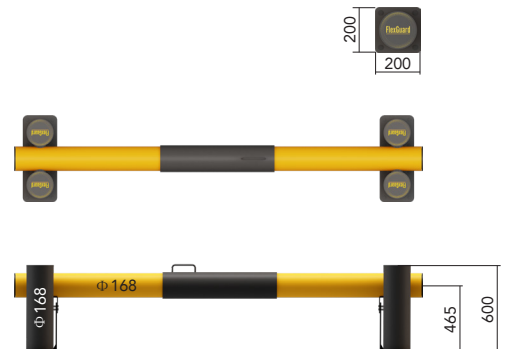


The FlexGuard Dockgate is developed to secure loading docks, access points, and other industrial areas with high vehicle or foot traffic, especially in areas with elevated surfaces or open edges posing a security risk.

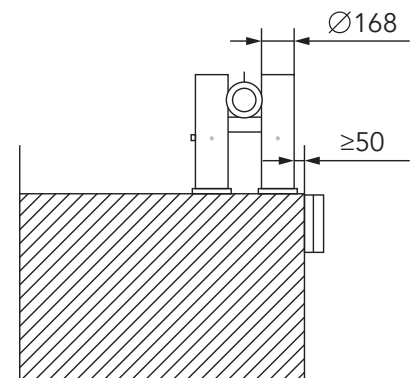
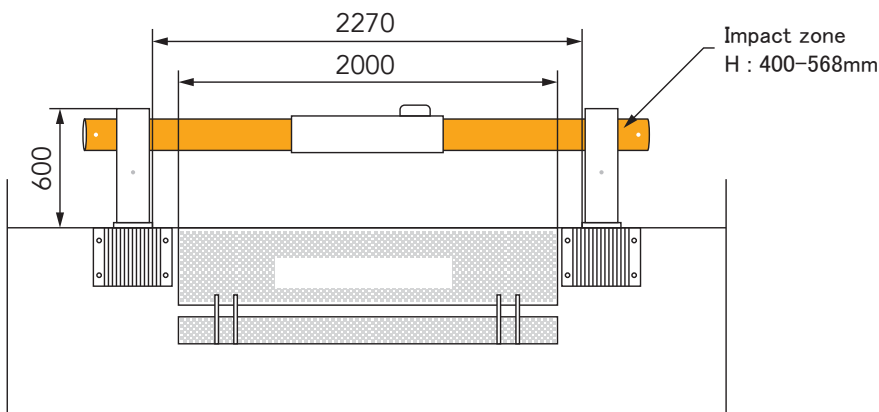
The Dockgate helps prevent accidental falls or collisions during the loading of goods into containers or trucks.

Technical Information

| DG168 | |
|---------------|--|
| Height | 600mm |
| Post Diameter | 168mm |
| Beam Diameter | 168mm |
| Base Plate | 200*200*10mm |
| Impact Energy | Impact test angle at 90°: 10000J, 6.0t forklift hit at 6.5km/h |



Dimensions (mm)

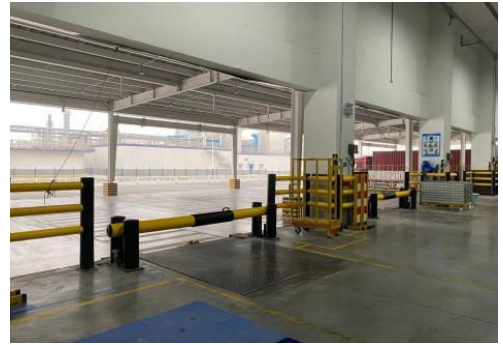


Color Rail: RAL 1003 **Signal Yellow** Post: RAL 9005 **Jet Black**

Temperature -5 to 50 °C

Application:

Ideal for use in logistic centers, warehouses and loading docks where you have elevated surfaces or open edges in the loading bay.



Closed State



Open State



FlexGuard

Designed for simple installation, long-lasting performance, and maximum damage prevention.

FlexGuard is a new line of flexible impact barriers designed for flexible impact protection, maximum performance and maximum safety. Constructed from durable, impact-resistant Polypropylene (PP), the FlexGuard product line is highly durable and suitable for use in various industrial environments. Minimizes damage to concrete floors that is typically associated with steel barriers. Its design allows easy installation and maintenance, ensuring minimal downtime for your operations.

Certifications:

Product:

TÜV SÜD TÜV Rhein Test CE ISO RoHS

Material (Armorflex):

Flame Retardant Test



Material:

The material used in FlexGuard, Armorflex, has self-recovery and memory capability. Through special nano processing technology, the molecular structure of the material is constructed into a regular linear network structure. It can absorb, delay and eliminate impact energy and rebound to its original shape after strong impact.

