

FlexGuard

# FLEXGUARD FLEXIBLE IMPACT BARRIERS FOR MAXIMUM SAFETY

PROTECTING PEOPLE, PROPERTY AND PROCESSES

**FLEXGUARD IS A NEW LINE OF FLEXIBLE IMPACT BARRIERS DESIGNED FOR FLEXIBLE IMPACT PROTECTION, MAXIMUM PERFORMANCE AND MAXIMUM SAFETY.**



**Simple  
Installation**

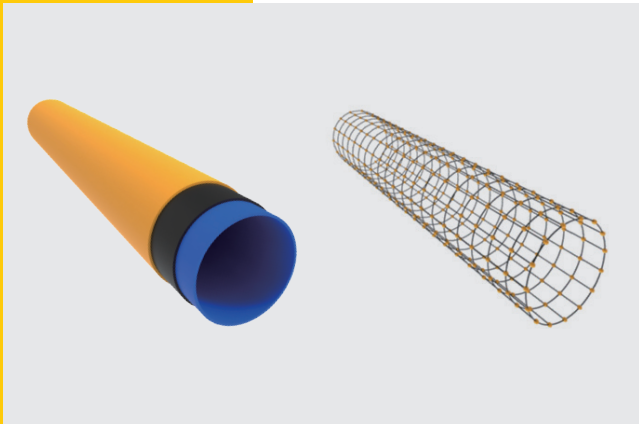


**Long-Lasting  
Performance**



**Maximum Damage  
Prevention**

**DURABLE AND IMPACT-RESISTANT MATERIAL**



Constructed from durable, impact-resistant polypropylene (PP), the FlexGuard product line is highly durable and suitable for use in various industrial environments.

FlexGuard has self-recovery and memory capabilities. Through special nano processing technology, the molecular structure of the material is constructed into a regular linear network structure. The material is built up of 3 layers:

- 1) The core strength layer
- 2) Central zone layer for absorbing impact
- 3) UV-resistant outer color layer

FlexGuard can absorb, delay and eliminate impact energy and rebound to its original shape after strong impact, making this an ideal safety solution for industrial facilities with high-traffic areas.

The modular design allows for easy installation and maintenance, ensuring minimal downtime for your operations.



**CERTIFICATIONS:**

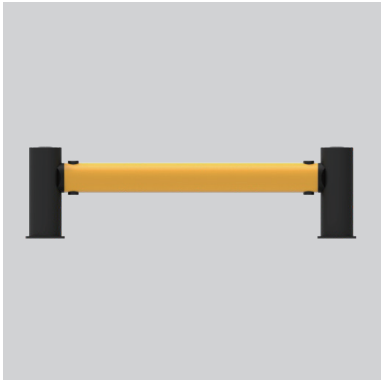
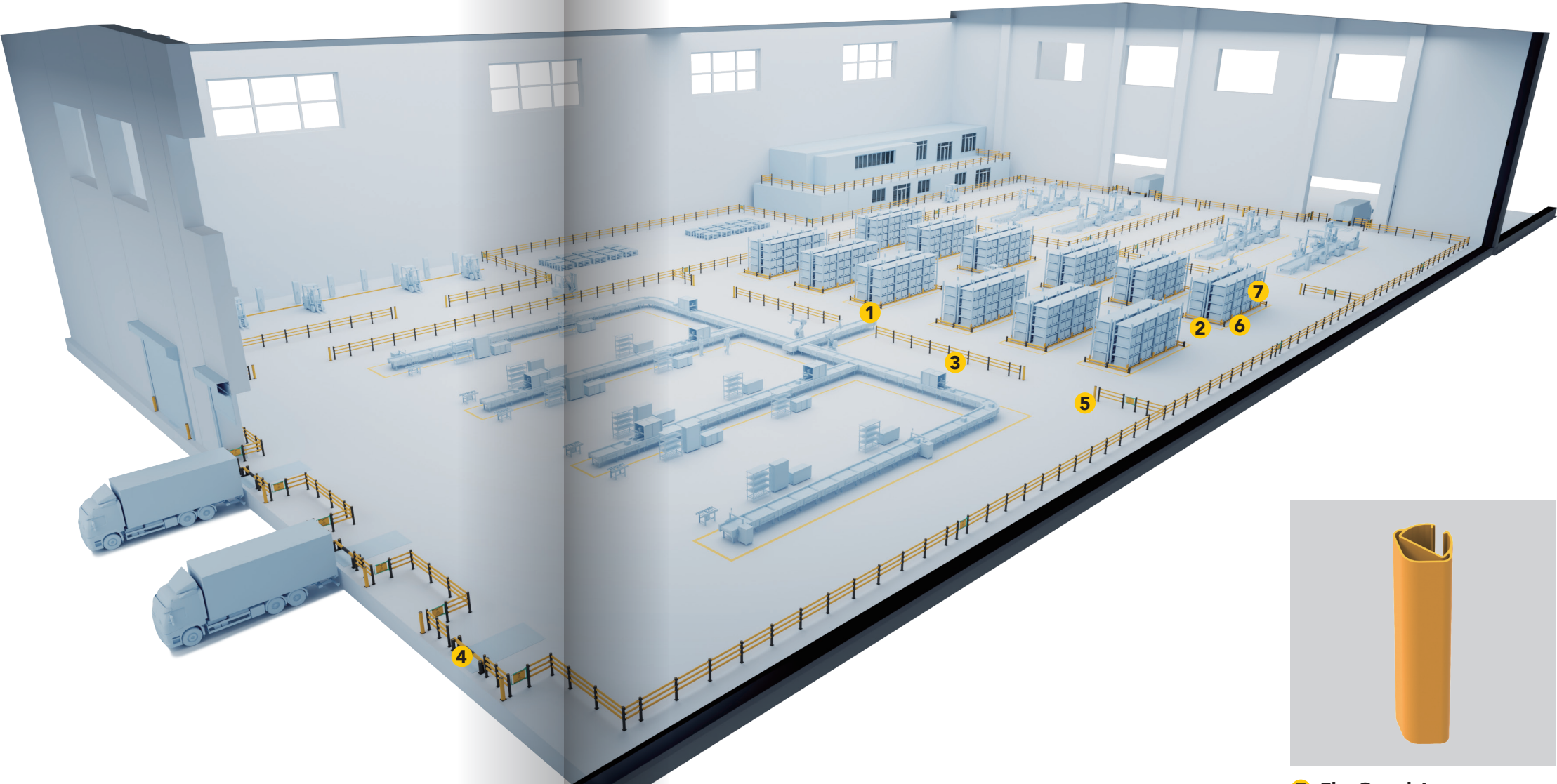
**Product:**  
TÜV SÜD TÜV Rhein Test CE ISO RoHS

**Material – Armorflex (Polypropylene):**  
Flame Retardant Test

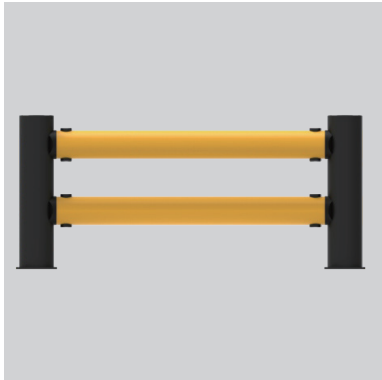


# COMPLETE WAREHOUSE SOLUTION FOR IMPACT PROTECTION

**FlexGuard**



**1** FlexGuard Lo-safe



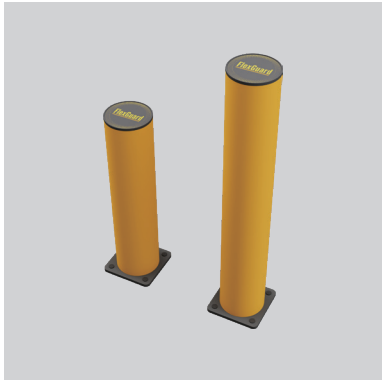
**2** FlexGuard Mid-safe



**3** FlexGuard Hi-safe



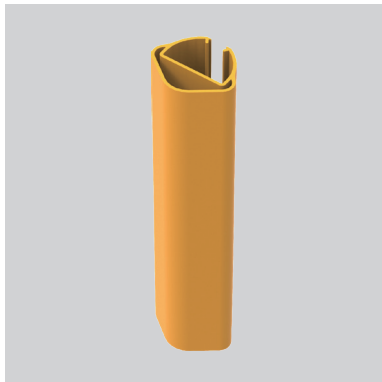
**4** FlexGuard Dockgate



**5** FlexGuard Sentinel

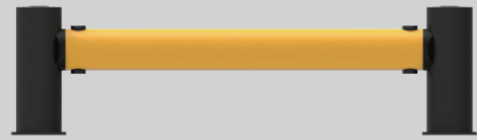


**6** FlexGuard Anchor



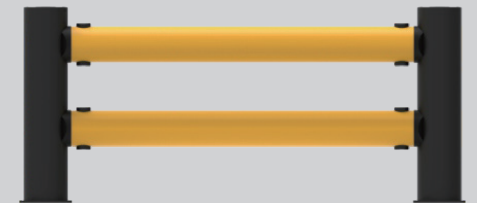
**7** FlexGuard Armor





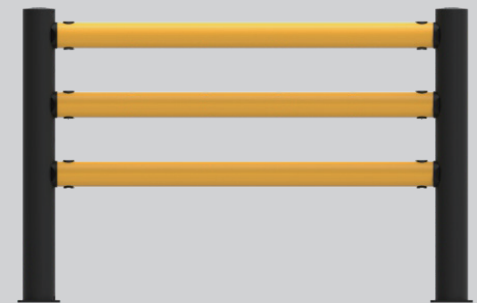
## FlexGuard Lo-safe

The FlexGuard Lo-safe is a single rail impact protection barrier designed to safeguard machines, infrastructure and employees against accidental impacts from forklifts, pallet trucks, and other industrial facilities.



## FlexGuard Mid-safe

The FlexGuard Mid-safe is a double rail impact protection barrier designed to safeguard machines, infrastructure and employees against accidental impacts from forklifts, pallet trucks, and other industrial facilities.



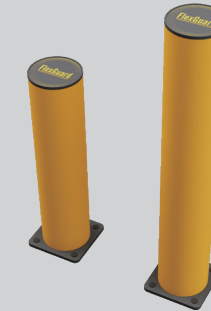
## FlexGuard Hi-safe

The FlexGuard Hi-safe is a triple rail impact protection barrier designed to safeguard machines, infrastructure and employees in industrial environments but is in particular used for the separation of pedestrian and vehicle traffic.



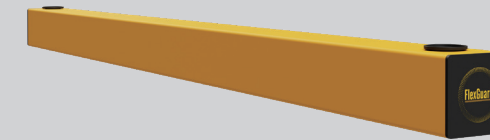
## FlexGuard Dockgate

The FlexGuard Dockgate is developed to secure loading docks, access points, and other industrial areas with high vehicle or foot traffic, especially in areas with elevated surfaces or open edges posing a security risk. The Dockgate helps prevent accidental falls or collisions during the loading of goods into containers or trucks.



## FlexGuard Sentinel

The FlexGuard Sentinel range of bollards are engineered to protect exposed edges, corners, and key structural areas such as doorways, loading docks, building corners, and machinery perimeters in industrial facilities. It offers reliable protection against accidental impacts from forklifts, pallet trucks, and other industrial vehicles.



## FlexGuard Anchor

The FlexGuard Anchor is designed to protect walls, AGV areas, front of racks and other critical structures at ground level from vehicle forks. This product can be integrated into the FlexGuard Lo-safe, FlexGuard Mid-safe, and FlexGuard Hi-safe product series for extra protection.



## FlexGuard Armor

FlexGuard Armor offers a flexible, dependable solution for protecting warehouse racking from damage caused by forklifts, pallet trucks, and other machinery. Engineered to absorb and deflect impact, it helps prevent structural damage to rack legs, safeguarding the integrity and safety of your storage systems.

**All the products are available in different variants depending on the impact-resistance strength requested.**

**A SAFER TOMORROW**  
**■ SINCE 1955 →**



**Troax Safety Systems India Private Ltd.**

Head Office: Plot No 323-Part A, Bommasandra Jigani Link Road Industrial Area, Anekal Taluk, Bangalore 560105, India.

Warehouse Office: Gat-118/1 Wasuli, Chakan Phase 2, Pune, 410501, Maharashtra, India.

TEL: +91 9686 445 146 | Email: [contact.india@troax.com](mailto:contact.india@troax.com) | URL: [www.troax.com/in/](http://www.troax.com/in/)