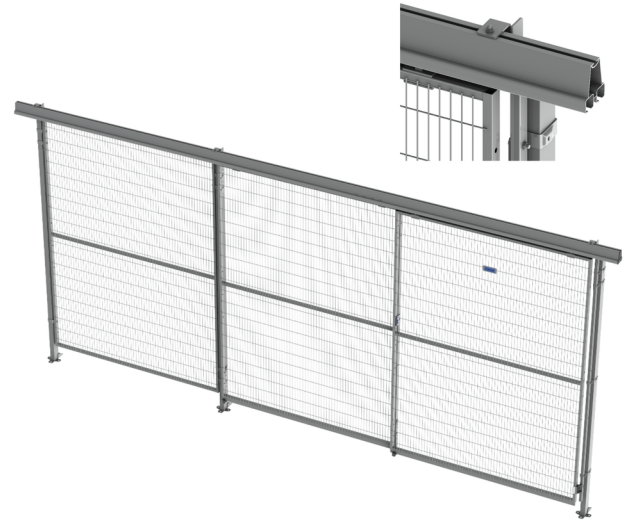


Machine guard door

The carrier sliding door in double rail can be built from our mesh and polycarbonate panels to fit your chosen machine guard system. The door is built using the standard panel height of 2050 mm in up to 6 widths together with either the 60x40 mm or 80x80 mm posts. The panels and posts together with the top rail and door kit are supplied separate for assembly on site.

Depending on the risk assessment, you choose the preferable lock for your door; Magnetic Lock, Cylinder Lock or the Troax Safe Lock built to fit many safety switches.

Maximum opening width as standard option is approximately 3000 mm.



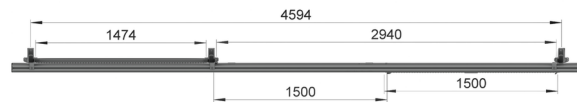
FACTS

Door dimensions, system height 2050 mm

Panel Option (mm)	Door Opening Width (mm)
500+500+500	980
700+700+700	1380
800+800+800	1580
1000+1000+1000	1980
1200+1200+1200	2380
1500+1500+1500	2980

Standard colour for the 60x40 mm posts are grey RAL7037, black RAL9005 or yellow RAL1018. Standard colour for mesh panels are RAL 7037 and RAL 9005

Doors can be made in the colour of your choice.



LOCK OPTIONS

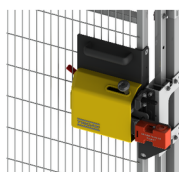
Magnetic Lock (Kit 6410)



Cylinder Lock (Kit 5720)



Safe Lock (Kit 5020)



Safe Lock ES (Kit 8300)

