

POST 60X40

The 60x40 mm post is assembled together with the Smart Fix, Rapid Fix and Safe Fix system. It's available in three heights as standard: 1,400 mm, 2,200 mm and 3,000 mm. The posts can be cut to any required height and also extended, using the extension bracket or Smart Splice. The welded base results in a stable and robust construction which make it very impact resistant, up to 2100 joules.



FACTS

ART. NO	COMPONENTS
26510001	Post 60x40x3000
29601451	Post 60x40x2500
29601501	Post 60x40x1400
29601521	Post 60x40x2200
29601591	Post 60x40x2650

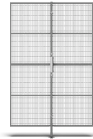
Finish on panels, posts and powder coated accessories has the last figure variants in **ART. NO.**

"1" = RAL 7037 Dusty Grey; "2" RAL 1018 Zink Yellow; "5" All other RAL colours or cut/welded; "6" RAL 9005 Jet Black, "8" Hot dip galvanized

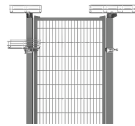
ACCESSORIES



SMART SPLICE



EXTENSION
BRACKET



WIRE TRAY SYSTEM



GAP COVER



TUBES

COMBINE WITH



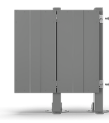
SMART POST



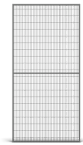
SMART FIX



RAPID FIX



SAFE FIX



PANEL ST20



POST 60X40

MACHINE GUARD
WAREHOUSE PARTITIONING
AUTOMATED WAREHOUSE

IMAGES

